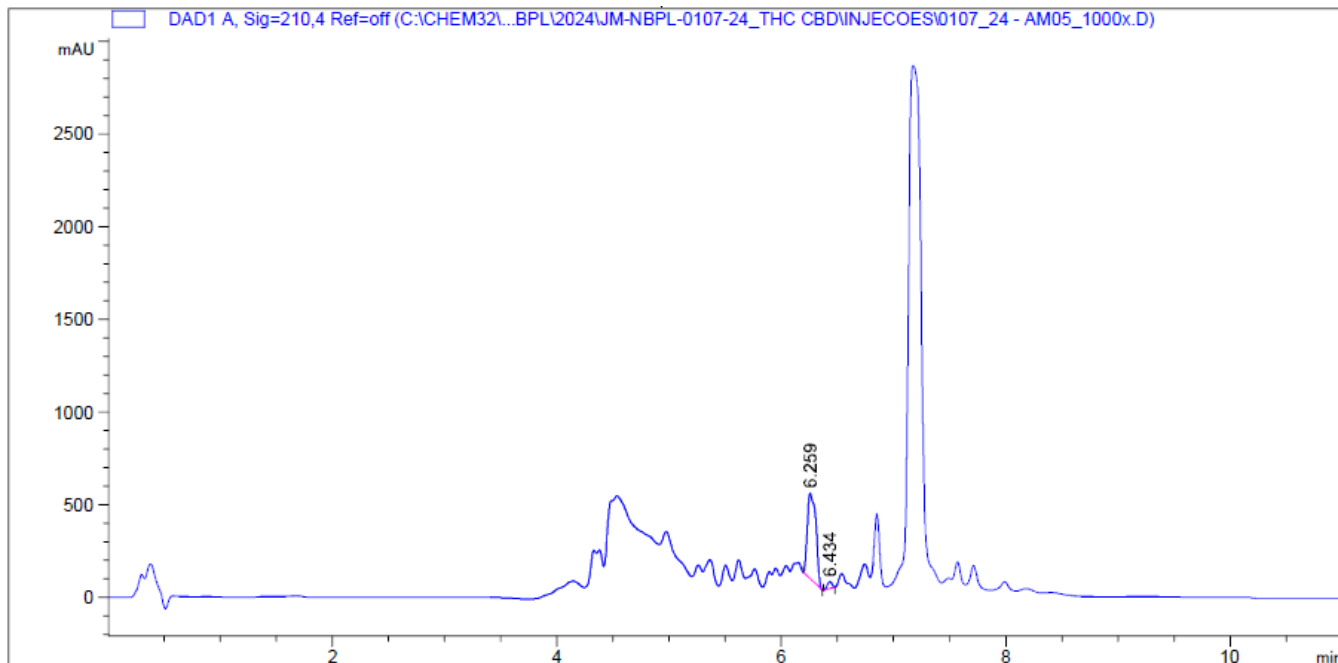


=====
Acq. Operator : SYSTEM Seq. Line : 10
Acq. Instrument : Agilent 1220 Location : 10
Injection Date : 7/22/2024 12:38:16 PM Inj : 1
Inj Volume : 10.000 µl
Acq. Method : C:\CHEM32\1\METHODS\THC+CBD.M
Last changed : 7/22/2024 10:49:20 AM by SYSTEM
Analysis Method : C:\CHEM32\1\METHODS\CBD.M
Last changed : 7/22/2024 2:54:29 PM by SYSTEM



=====
External Standard Report
=====

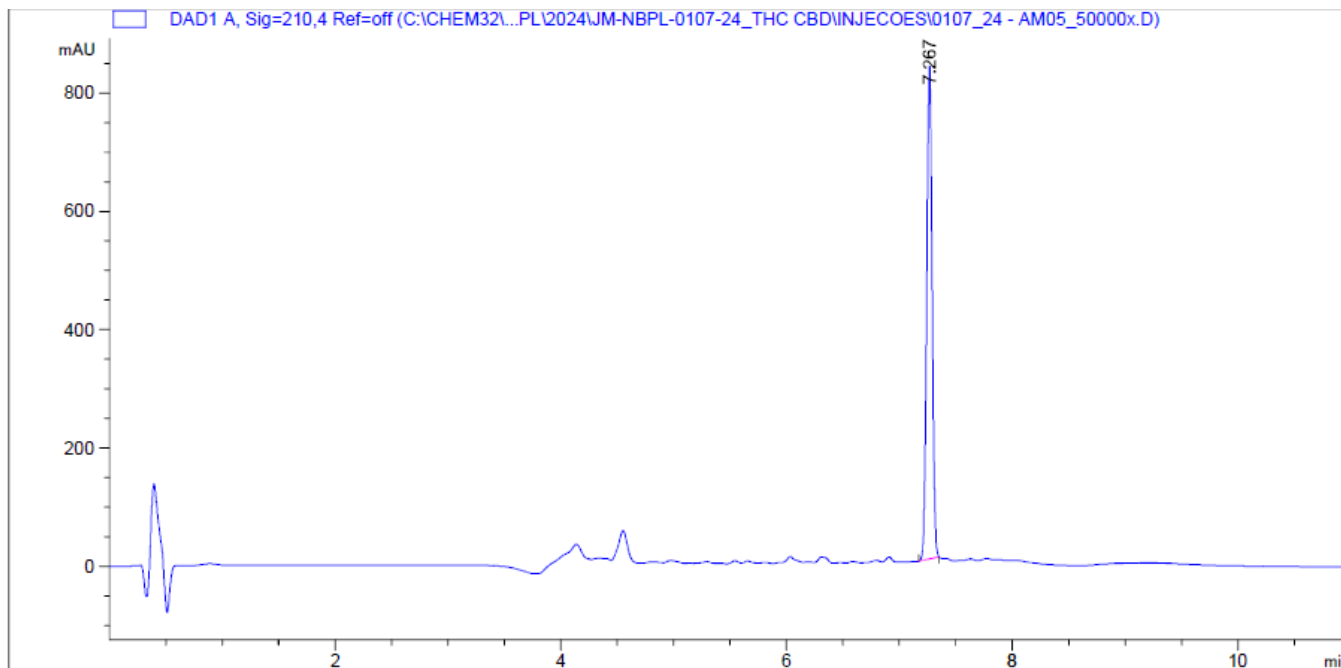
Sorted By : Signal
Calib. Data Modified : 7/22/2024 1:47:18 PM
Multiplier : 1.0000
Dilution : 1.0000
Do not use Multiplier & Dilution Factor with ISTDs

Signal 1: DAD1 A, Sig=210,4 Ref=off

RetTime [min]	Type	Area [mAU*s]	Amt/Area [mg/L]	Amount	Grp	Name
6.259	BB	2447.09351	5.49445e-3	13.44543		CBD
Totals :				13.44543		

=====
*** End of Report ***

=====
Acq. Operator : SYSTEM Seq. Line : 21
Acq. Instrument : Agilent 1220 Location : 21
Injection Date : 7/22/2024 2:49:36 PM Inj : 1
Inj Volume : 10.000 µl
Acq. Method : C:\CHEM32\1\METHODS\THC+CBD.M
Last changed : 7/22/2024 10:49:20 AM by SYSTEM
Analysis Method : C:\CHEM32\1\METHODS\THC.M
Last changed : 7/22/2024 2:47:03 PM by SYSTEM



=====
External Standard Report
=====

Sorted By : Signal
Calib. Data Modified : 7/22/2024 2:11:31 PM
Multiplier : 1.0000
Dilution : 1.0000
Do not use Multiplier & Dilution Factor with ISTDs

Signal 1: DAD1 A, Sig=210,4 Ref=off

RetTime [min]	Type	Area [mAU*s]	Amt/Area [mg/L]	Amount	Grp Name
7.267	BBA	2782.81616	5.37334e-3	14.95302	THC
Totals :				14.95302	

=====
*** End of Report ***