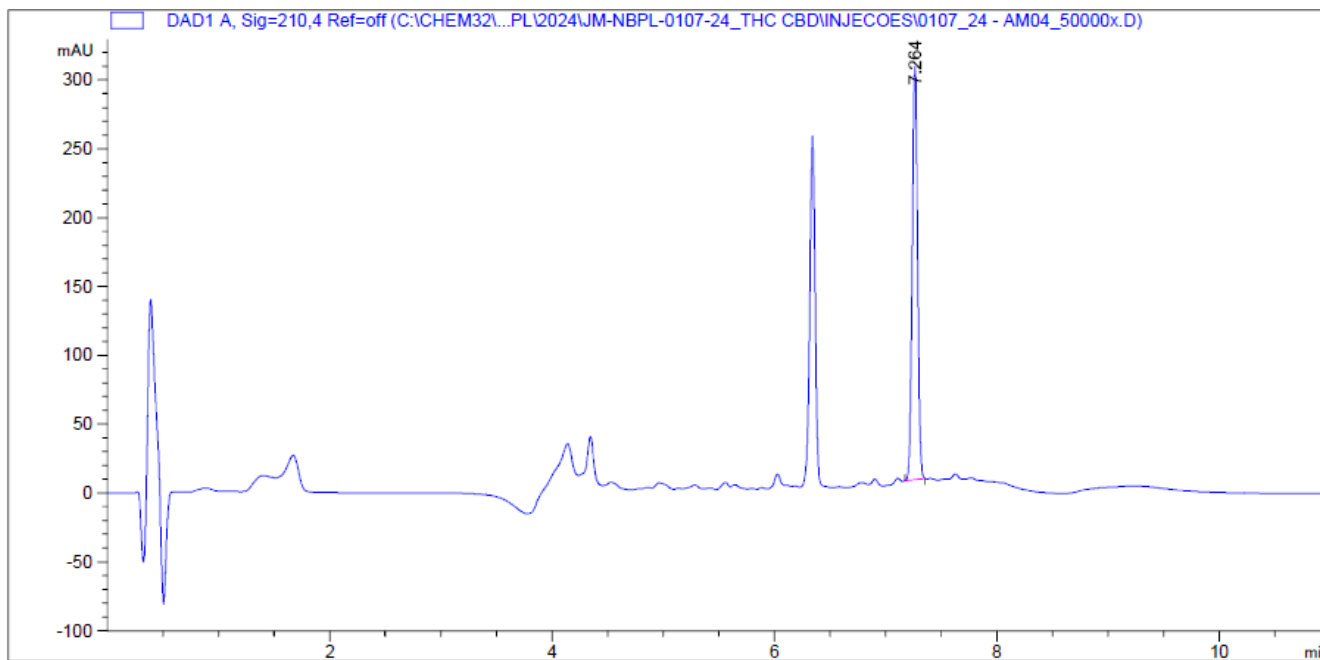


=====
Acq. Operator : SYSTEM Seq. Line : 20
Acq. Instrument : Agilent 1220 Location : 20
Injection Date : 7/22/2024 2:37:38 PM Inj : 1
Inj Volume : 10.000 µl
Acq. Method : C:\CHEM32\1\METHODS\THC+CBD.M
Last changed : 7/22/2024 10:49:20 AM by SYSTEM
Analysis Method : C:\CHEM32\1\METHODS\THC.M
Last changed : 7/22/2024 2:47:03 PM by SYSTEM



=====
External Standard Report
=====

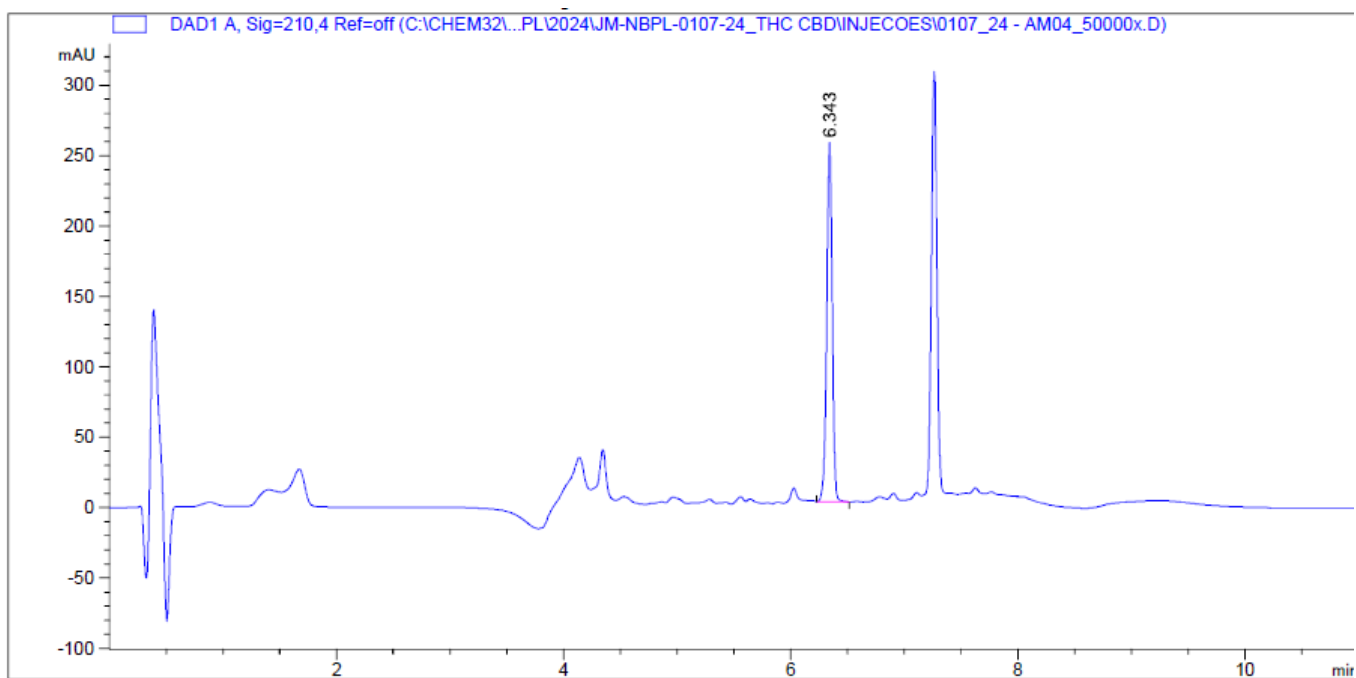
Sorted By : Signal
Calib. Data Modified : 7/22/2024 2:11:31 PM
Multiplier : 1.0000
Dilution : 1.0000
Do not use Multiplier & Dilution Factor with ISTDs

Signal 1: DAD1 A, Sig=210,4 Ref=off

RetTime [min]	Type	Area [mAU*s]	Amt/Area [mg/L]	Amount	Grp	Name
7.264	BBA	1003.16791	5.76089e-3	5.77914		THC
Totals :			5.77914			

=====
*** End of Report ***

=====
Acq. Operator : SYSTEM Seq. Line : 20
Acq. Instrument : Agilent 1220 Location : 20
Injection Date : 7/22/2024 2:37:38 PM Inj : 1
Inj Volume : 10.000 µl
Acq. Method : C:\CHEM32\1\METHODS\THC+CBD.M
Last changed : 7/22/2024 10:49:20 AM by SYSTEM
Analysis Method : C:\CHEM32\1\METHODS\CBD.M
Last changed : 7/22/2024 2:49:59 PM by SYSTEM
(modified after loading)



=====
External Standard Report
=====

Sorted By : Signal
Calib. Data Modified : 7/22/2024 1:47:18 PM
Multiplier : 1.0000
Dilution : 1.0000
Do not use Multiplier & Dilution Factor with ISTDs

Signal 1: DAD1 A, Sig=210,4 Ref=off

RetTime [min]	Type	Area [mAU*s]	Amt/Area [mg/L]	Amount	Grp	Name
6.343	BBA	865.42413	5.98925e-3	5.18324		CBD
Totals :			5.18324			

=====
*** End of Report ***