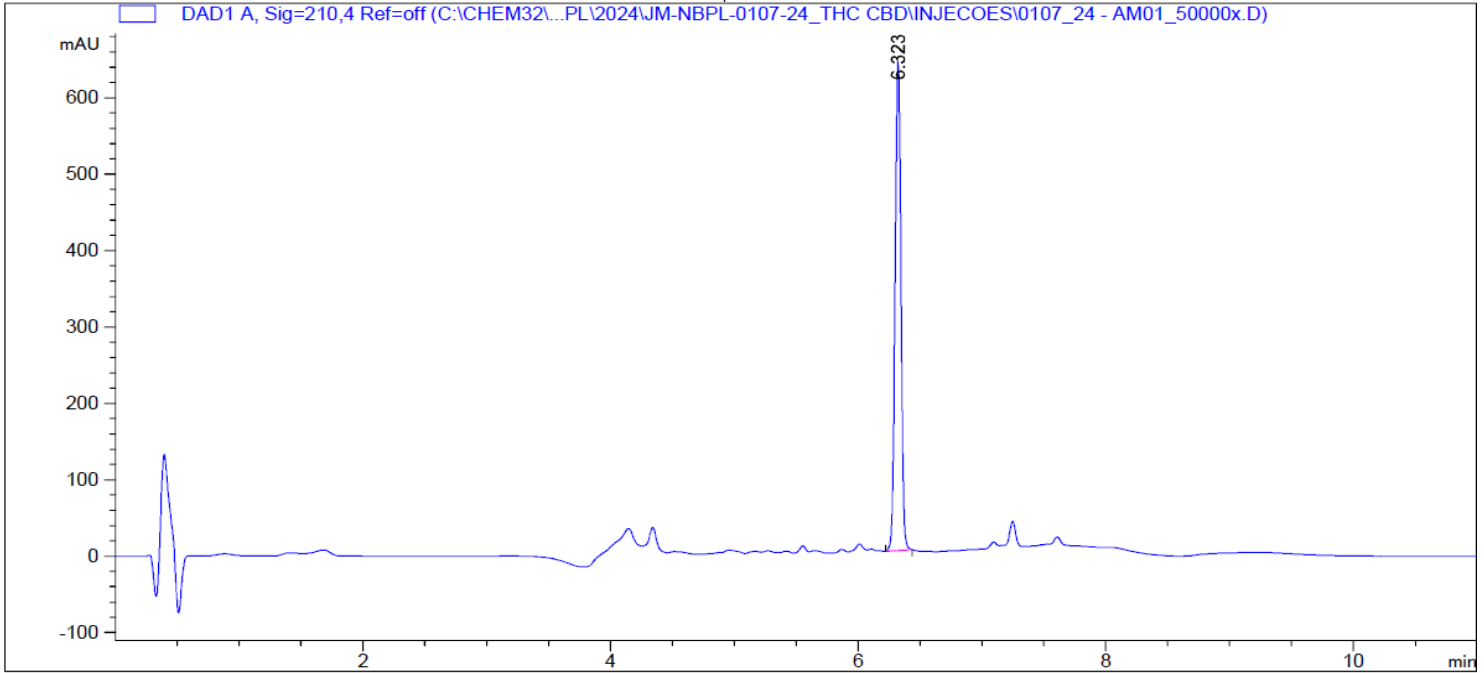


=====  
Acq. Operator : SYSTEM Seq. Line : 17  
Acq. Instrument : Agilent 1220 Location : 17  
Injection Date : 7/22/2024 2:01:49 PM Inj : 1  
Inj Volume : 10.000 µl  
Acq. Method : C:\CHEM32\1\METHODS\THC+CBD.M  
Last changed : 7/22/2024 10:49:20 AM by SYSTEM  
Analysis Method : C:\CHEM32\1\METHODS\CBD.M  
Last changed : 7/22/2024 2:27:56 PM by SYSTEM



=====  
External Standard Report  
=====

Sorted By : Signal  
Calib. Data Modified : 7/22/2024 1:47:18 PM  
Multiplier : 1.0000  
Dilution : 1.0000  
Do not use Multiplier & Dilution Factor with ISTDs

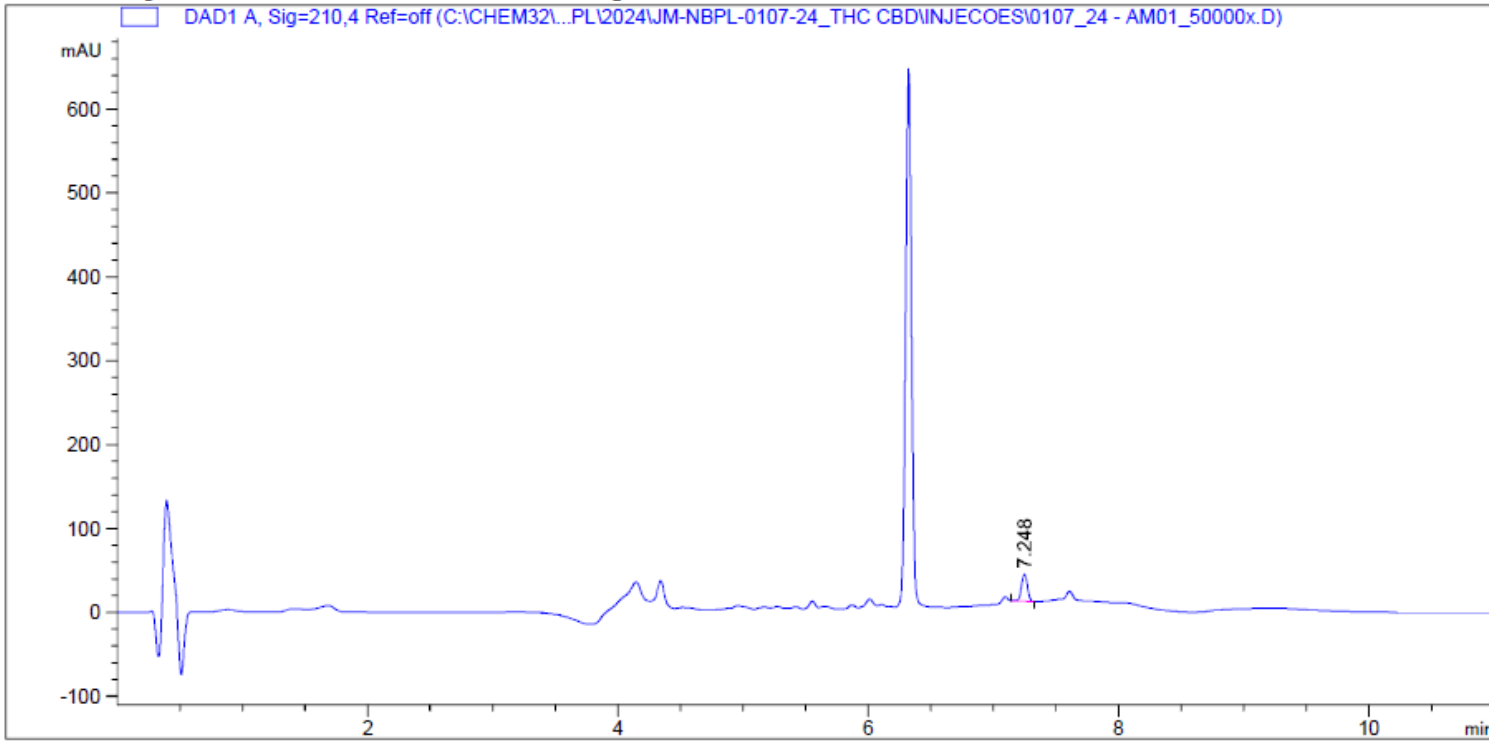
Signal 1: DAD1 A, Sig=210,4 Ref=off

RetTime [min]	Type	Area [mAU*s]	Amt/Area [mg/L]	Amount	Grp	Name
6.323	BBA	2080.01782	5.54223e-3	11.52793		CBD

Totals : 11.52793

=====  
\*\*\* End of Report \*\*\*

=====  
Acq. Operator : SYSTEM Seq. Line : 17  
Acq. Instrument : Agilent 1220 Location : 17  
Injection Date : 7/22/2024 2:01:49 PM Inj : 1  
Inj Volume : 10.000 µl  
Acq. Method : C:\CHEM32\1\METHODS\THC+CBD.M  
Last changed : 7/22/2024 10:49:20 AM by SYSTEM  
Analysis Method : C:\CHEM32\1\METHODS\THC.M  
Last changed : 7/22/2024 2:25:08 PM by SYSTEM  
=====



=====  
External Standard Report  
=====

Sorted By : Signal  
Calib. Data Modified : 7/22/2024 2:11:31 PM  
Multiplier : 1.0000  
Dilution : 1.0000  
Do not use Multiplier & Dilution Factor with ISTDs

Signal 1: DAD1 A, Sig=210,4 Ref=off

RetTime [min]	Type	Area [mAU*s]	Amt/Area [mg/L]	Amount	Grp	Name
7.248	VB R	105.90687	1.08951e-2	1.15387		THC

Totals : 1.15387

=====  
\*\*\* End of Report \*\*\*  
=====